



yrice

A system of four staves of musical notation. The top staff is a vocal line with a treble clef and a common time signature. The three lower staves are lute tablature, with diamond-shaped notes on a six-line staff. The word 'yrice' is written below the first staff.

c leifon

A system of four staves. The top staff is a vocal line with a treble clef and a common time signature. The three lower staves are lute tablature. The word 'c leifon' is written below the first staff.

yrice

A system of two staves of musical notation. The top staff is a vocal line with a treble clef and a common time signature. The bottom staff is lute tablature. The word 'yrice' is written below the first staff.

cley fon

A system of four staves. The top staff is a vocal line with a treble clef and a common time signature. The three lower staves are lute tablature. The word 'cley fon' is written below the first staff.

Jo. Monton. Dites moy toutes vds pensees LXXXI



Two staves of musical notation in mensural style. The top staff begins with a clef and a 'C' time signature. The notes are diamond-shaped. The word 'yrie' is written below the first few notes.

A single staff of musical notation, continuing the melody from the previous system. The word 'cley son' is written below the notes.

Four empty musical staves, likely for a lute or other accompaniment.



Two staves of musical notation in mensural style. The top staff begins with a clef and a 'C' time signature. The notes are diamond-shaped. The word 'yrie' is written below the first few notes.

A single staff of musical notation, continuing the melody from the previous system. The words 'cley son' are written below the notes.

Four empty musical staves, likely for a lute or other accompaniment.

Ho. zibouton



Handwritten musical score on a five-line staff. The notation consists of diamond-shaped notes with stems, typical of medieval manuscripts. The piece is divided into sections labeled "D. iste", "cleyfon", and "Kyaic". The "D. iste" section begins with a C-clef and a common time signature. The "cleyfon" section starts with a B-flat clef and a common time signature. The "Kyaic" section also begins with a B-flat clef and a common time signature. The score concludes with a double bar line and the label "c leyson".



Handwritten musical score on a five-line staff, continuing the style of the first system. It features diamond-shaped notes and stems. The sections are labeled "D. iste", "Kyaic", "c leyson", and "cleyfon". The "D. iste" section starts with a C-clef and a common time signature. The "Kyaic" section begins with a C-clef and a common time signature. The "c leyson" section starts with a C-clef and a common time signature. The "cleyfon" section begins with a B-flat clef and a common time signature. The score ends with a double bar line.



Jo. Monton.

LXXXII



First staff of music, treble clef, common time signature 'C'. The staff contains a series of diamond-shaped notes.

Basse

Second staff of music, bass clef, common time signature 'C'. The staff contains a series of diamond-shaped notes.

Third staff of music, treble clef, common time signature 'C'. The staff contains a series of diamond-shaped notes.

elcyfon

Fourth staff of music, treble clef, common time signature 'C'. The staff contains a series of diamond-shaped notes.

Kyrie

Fifth staff of music, treble clef, common time signature 'C'. The staff contains a series of diamond-shaped notes.

Sixth staff of music, treble clef, common time signature 'C'. The staff contains a series of diamond-shaped notes.

elcyfon



Seventh staff of music, treble clef, common time signature 'C'. The staff contains a series of diamond-shaped notes.

Basse

Eighth staff of music, bass clef, common time signature 'C'. The staff contains a series of diamond-shaped notes.

Ninth staff of music, treble clef, common time signature 'C'. The staff contains a series of diamond-shaped notes.

elcy fon Kyrie

Tenth staff of music, treble clef, common time signature 'C'. The staff contains a series of diamond-shaped notes.

Eleventh staff of music, treble clef, common time signature 'C'. The staff contains a series of diamond-shaped notes.

Twelfth staff of music, treble clef, common time signature 'C'. The staff contains a series of diamond-shaped notes.

c

elcyfon



10. Mouton



**C** in terra pax hominibus bonae voluntatis laudamus te benedicimus te adoramus te glorificamus te gratias agimus tibi domine deus rex caelestis rex celestis deus pater omnipotens



**C** in terra pax hominibus bonae voluntatis laudamus te benedicimus te adoramus te glorificamus te gratias agimus tibi domine deus rex celestis deus pater omnipotens



E in ter rapax boni nibus bone vo lun tatis Laudamus te

Benedicimus te Bene di ci mus te

Ad oramus te Glorificamus te a gi mus ti bi a gi mus ti bi ptop

ter magnam gloziam tu am Domi ne de us

rex celestis de us pa ter om ni potens om ni po tens Uerte



E in terra par boni nibus bone

voluntatis Laudamus te benedici mus te bene di ci mus te Ado

ramus te glozi fi camus te Gra ti as

agimus ti bi propter magnam gloziam tuam Domine deus Domine

de us rex celestis deus pater omni potens omni po tens Do Uerte.

30. ADONTOH

Residuum

Domine fili unigenite Jesu christe  
 Domine deus agnus dei filius pa  
 tris filius patris  
 Qui tollis peccata mundi misere re  
 no bis  
 Qui tollis peccata  
 mundi Suscipe deprecati onem  
 no

Residuum

tens Domine fili Jesu christe Domine deus agnus de  
 i filius patris  
 Qui tollis peccata mundi  
 misere re nobis mi  
 se re re nobis Qui tollis peccata  
 mundi Suscipe deprecati onem  
 no



Residuum

Do mi ne fi li v ni ge nite Je su ch. iste

Domine deus Domine deus agnus dei fili us patris fi li

us pa tris Qui tollis peccata mundi mi se re re nobis

Qui tol lis pec. ca ta mundi

Su scipe depre ca ti onem no stram no Uerte.

Residuum

mine fi li Je su ch. iste Domine deus a gnus dei

fi li us patris fi li us pa tris

Qui tollis pec. cata man di. mi se re re nobis Qui tol

lis pec. cata man di. Susci pe depre ca ti onem no

Uerte. Cito.

IO. MOUTON.

Residuum

fram no fram Qui sedes ad dexte ram  
 pa tris mi se re re nobis quoniam tu so lus sanc  
 tus Tu solus dominus Tu solus altis simus Je su chris te cu sacro spi ri tu  
 In glo ri a dei pa tris In glo ri a de i pa tris Amen

Residuum

fram qui sedes ad dex  
 teram patris mi se re re nobis quoniam tu solus sanctus Tu  
 solus dominus Tu solus altissimus Je su chris te cum sancto spi ri tu cum sacro spi ri  
 tu In glo ri a dei pa tris In glo ri a de i pa tris Amen

Jo. BOUTON.

LXXXV

Residuum.

stram no

stram qui sedes ad dexteram patris mi se re re nobis quo ni

am tu solus sanctus tu solus do mi

nus tu solus altissimus Je su chris te Cu sancto spi ri tu in glo ri a de i

patris in glo ri a de i pa tris Et men

Residuum.

stram no

stram qui sedes mi se re re nobis quoniam tu solus sanctus

Tu solus do minus tu solus altissimus Je su chris te Cu sancto spi ri tu in

glo ri a de i patris Et men in glo ri a de i patris Et men



To-Mouton



A  
 Et terram ce li et terre Et in vi si bi  
 lum Et in nu ci um Je su chri stum fi li um de  
 i y nige nitum et ex patre na tum an te om ni a se cu la deum  
 de deo Ge ni tum de lu mine de um de de o  
 ve ro con sub stan ti a lem pa tris om ni a facta sunt



A  
 trem om ni po tentem factorem ce li  
 et terre Et in vi si bi li um  
 Je su chri stum fi li um de i y ni genitum  
 na tum an te om ni a se cu la om ni a se cu la de um de de  
 o Ge ni tum de lu mine de um ve rum de de o ve ro ge nitum no fac  
 tum per que om ni a fac ta sunt qui pro p  
 Uerte.



I fi li um om nium Et in



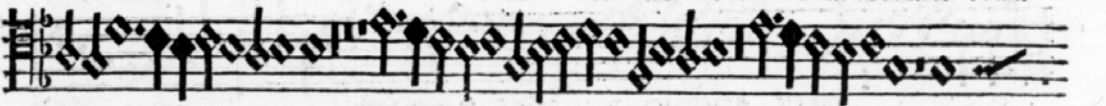
ul si bi lium Et in vnam dominum



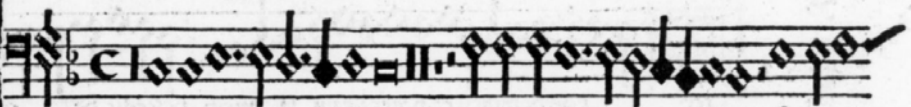
Je sum cbristū si lium de i v ni ge nitum Et ex patre natum



an te omni a se cu la de um de de o lumē de lumine de um



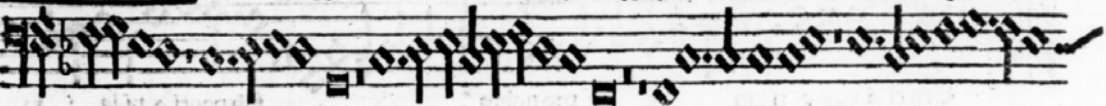
verum de deo vero Cum substantialem patri omnia facta sunt qui



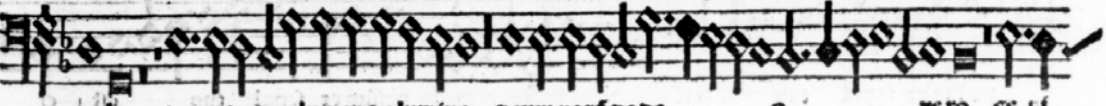
Etrem om ni po tentem vi si bi li um om nium Et in vi



si bi lium Et in v nam do minum Je sum



cbristum si lium de i v ni ge nitum Et ex patre natum an te omnia se



cu la de um de de o lumē de lumine de um verū de de o vero ge nū



rū nō factum per quem omnia facta sūt qui ppter nos

Et c.

Ho. Bourron

Residua

Qui ppter nos hoies et ppter nram sa lutem descēdit de celis et incarnatus est de spi  
 ri tu sancto ex ma ri a vir gi ne et ho mo fac  
 tus est et ho mo fac tus est Cru ci fixus  
 e ti am pro nobis sub pon ti o pi la to pas sus  
 et sepul tus est Et resurrexit ter ti a di e se cū dū scrip turas et as  
 cendit in ce lum se det ad dex te ram pa tris

Residua

ter nos ho mines et ppter nram sa lutem descēdit de ce lis et in car natus  
 est de spi ri tu sancto ex ma ri a vir gi ne et ho mo fac tus est et ho mo fac tus est  
 Cru ci fi xus e ti am pro nobis sub pon ti o pi la to  
 pas sus et sepul tus est pas sus et sepul tus est et  
 resurre xit ter ti a di e se cū dum scrip turas et as cendit in ce lum  
 se det ad dex te ram pa tris



Jo. Mouton.

LXXXVII

**Refrain**

pppter nos homines Et ppter nraz salutem descēdit de ce lis Et in car  
natus est de spīri tu sanc to ex mari a virgine Et homo fac tus est  
Et homo fac tus est Crucifixus e tiam pro nobis sub pōrt  
o pi la to passus et sepul tus est  
Et resurrexit ter ti a di e  
secundū scrip turas ⁊ ascendit in celū sedet ad dexteram patris

**Refrain**

homines ⁊ ppter nraz descēdit de celis Et in carnatus est de spī ri tu  
sanco ex mari a virgi ne Et homo factus est Et ho mo factus est

**Crucifixus Tacet.**

Jo. Mouton

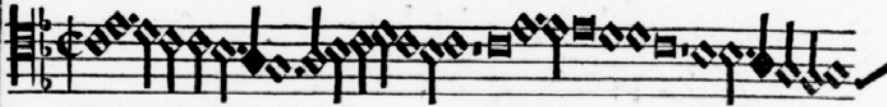


Et iterum venturus est cum gloria in dicitur re viuos et  
 mortuos Cuius regni Cuius regni non erit  
 finis et in spiritu sancti dominum qui ex patre filio  
 qui cum patre filio et cum gloria  
 factus est per prophetas

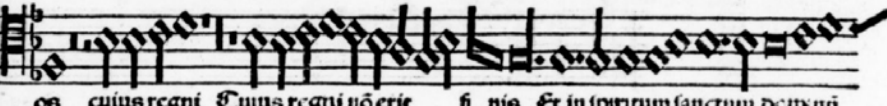


Et in gloria iudicare viuos et mortuos  
 cuius regni non erit finis cuius regni non  
 erit finis Et in spiritu sanctum dominum qui ex patre  
 filio et consubstantiale  
 qui cum patre et filio simul adoratur et conglorificatur  
 qui locutus est per prophetas

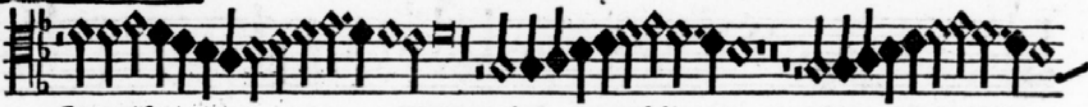
Jo. Mouton.



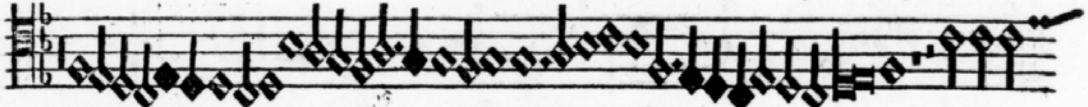
Et iterum venturus est cum gloria iudicare vivos et mortu



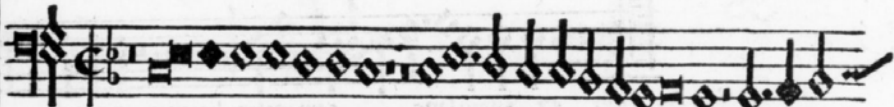
os cuius regni cuius regni non erit finis Et in spiritum sanctum dominum



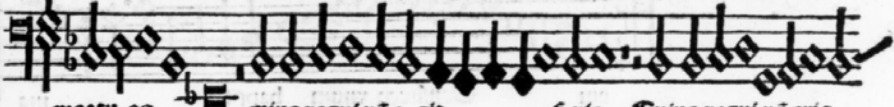
Et vivificantem qui ex patre filioque procedit qui cum patre et filio



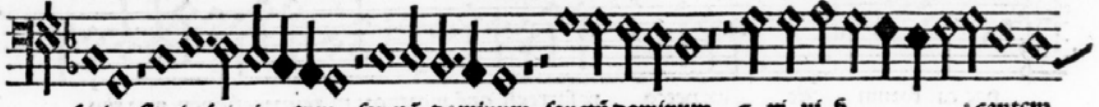
simul adoratur et conglorificatur qui locutus est per prophetas Et viam



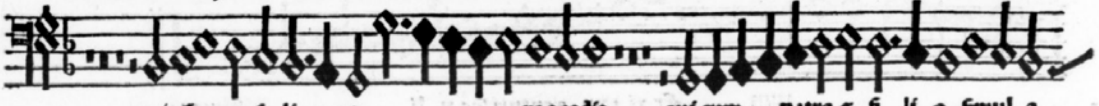
Et iterum venturus est cum gloria iudicare vivos et



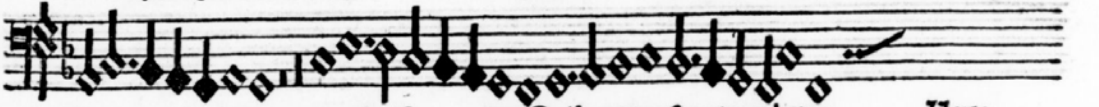
mortuos cuius regni non erit finis Cuius regni non erit



finis Et in spiritum sanctum dominum sanctum dominum et vivificantem



qui cum patre et filio procedit qui cum patre et filio simul a



do ratur conglorificatur Qui locutus est per prophetas Terte.



Jo. Mouton

Residuum

tis et v nam sanctam ca tbo licam et a po stolicam  
 ec cle si am Confi te or vnum bap tisma  
 in re missi onem pec ca to rum et ex pecto re sur recti onem mor tu o  
 rum Et vi tam ven turi se cu li A men

Residuum

tao Et vnam sanc tam carbo licam et a pesto licam ec cle si  
 am Confi te or vnum bap tisma in re missi onem  
 pec ca to rum Et ex pecto re sur recti onē mor tuorum re iuzze cti onem mor tu o  
 rum Et vi tam ven turi se cu li A men

Jo. MOURON.

Reclunum.

sanc tam ca tholicam et a posto licam ec

cle siam Ec cle si am Con fi te or v

num bap tis ma in re mis si onem pec ca to rum Et ex pec to re sur re cti onem

rum Et vi tam ven tu ri se cu li

Reclunum.

Et vi tam sanc tam cat ho licam et a posto licam ec

cle si am Con fi te or v num bap tis ma

In re mis si onem pec ca to rum Et ex pec to re sur re cti onem in os

tu o rum Et vi tam ven tu ri se cu li men

chord

di

Jo. Mouton



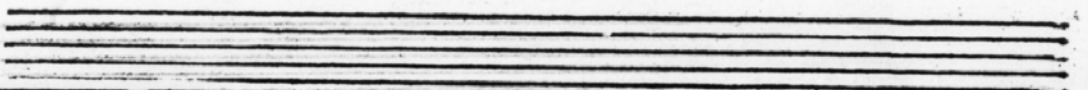
Musical staff with notes and lyrics: Sanc tus

Musical staff with notes and lyrics: Sanctus Sanc

Musical staff with notes and lyrics: tus

Musical staff with notes and lyrics: Do

Musical staff with notes and lyrics: minus de ne fab baorb



Musical staff with notes and lyrics: Sanc tus

Musical staff with notes and lyrics: Sanctus

Musical staff with notes and lyrics: Sanctus

Musical staff with notes and lyrics: Sanctus

Musical staff with notes and lyrics: Dominus de ne

Musical staff with notes and lyrics: fab baorb







Stave 1: Musical notation with lyrics 'Sanctus' below.

Stave 2: Musical notation with lyrics 'Sanctus' below.

Stave 3: Musical notation with lyrics 'Sanctus Dominus' below.

Stave 4: Musical notation with lyrics 'de' below.

Stave 5: Musical notation with lyrics 'us sabba orb' below.

Empty musical staves.



Stave 6: Musical notation with lyrics 'Sanctus' below.

Stave 7: Musical notation with lyrics 'Sanctus' below.

Stave 8: Musical notation with lyrics 'Sanctus Dominus de' below.

Stave 9: Musical notation with lyrics 'us sabba orb' below.

Empty musical staves.

Pleni Tacet



Pleni sunt ce li et terra gloria tua

Jo- hanson



First musical staff with notes and lyrics: Le niunt

Second musical staff with notes and lyrics: ce li

Third musical staff with notes and lyrics: Et

Fourth musical staff with notes and lyrics: ter ra

glo ri a tu a

Empty musical staves for accompaniment.



First musical staff with notes and lyrics: Leni sunt

Second musical staff with notes and lyrics: ce li

Third musical staff with notes and lyrics: Et

terra

glo ri a tu a

glo ri a tu a

Empty musical staves for accompaniment.



Jo. de Juron



Credo

A musical staff with a treble clef and a key signature of one flat (B-flat). It contains a series of notes and rests, starting with a 'C' time signature.

San na

A musical staff with a treble clef and a key signature of one flat. It contains a series of notes and rests.

A musical staff with a treble clef and a key signature of one flat. It contains a series of notes and rests.

A musical staff with a treble clef and a key signature of one flat. It contains a series of notes and rests.

In ex

A musical staff with a treble clef and a key signature of one flat. It contains a series of notes and rests.

celi filii

Benedictus

qui ve

A musical staff with a treble clef and a key signature of one flat. It contains a series of notes and rests.

rit

In no mine

A musical staff with a treble clef and a key signature of one flat. It contains a series of notes and rests.

do

mi ni

A musical staff with a treble clef and a key signature of one flat. It contains a series of notes and rests.

San na

A musical staff with a treble clef and a key signature of one flat. It contains a series of notes and rests.

A musical staff with a treble clef and a key signature of one flat. It contains a series of notes and rests.

In ec

celis

A musical staff with a treble clef and a key signature of one flat. It contains a series of notes and rests.

Four empty musical staves at the bottom of the page.

Jo: 2<sup>o</sup> Douron

XCII



San na

San na

San na

San na

Benedictus

San na

qui ve nit

In

qui ve nit



nomi ne do mi ni

San na

San na

San na

In

er

In

er

Benedictus Facet.

No. 280 Anton



First musical staff with notes and lyrics: *Agnus de i*

Second musical staff with notes and lyrics: *Qui tol lis*

Third musical staff with notes and lyrics: *pec ca ta mundi mi se re re qui tollit pecca ta mundi*

Fourth musical staff with notes and lyrics: *mi se re re nobis mi se re re nobis*

Empty musical staves with the text: *Secundus Agnus Facet.*



First musical staff of the second section with notes and lyrics: *Agnus de i qui tollit pec*

Second musical staff with notes and lyrics: *cata mundi qui tol lit peccata mun di*

Third musical staff with notes and lyrics: *mi se re re nobis*

Fourth musical staff with notes and lyrics: *A gnus de i*

Fifth musical staff with notes and lyrics: *qui tol lit pec ca ta mundi mi*

Sixth musical staff with notes and lyrics: *se re re no bis mi se re re no bis*



Jo. 2<sup>o</sup> Douron

XCIII



Musical staff with notes and a treble clef. Lyrics: *gnus de i qui tollis peccata mundi*

*gnus de i qui tollis peccata*

*mundi*

Musical staff with notes and a treble clef. Lyrics: *qui tollis peccata mundi mi se re re*

*qui tollis peccata*

*mundi mi se re re*

*touis*

Musical staff with notes and a treble clef. Lyrics: *mi se re re nobis*

*mi se re re*

*nobis*

Musical staff with notes and a treble clef. Lyrics: *ro bis et gnis de*

*ro bis*

*et*

*gnis de*

Musical staff with notes and a treble clef. Lyrics: *qui tollis peccata mundi*

*qui tollis peccata*

*mun di*

Musical staff with notes and a treble clef. Lyrics: *mi se re re mi se re re*

*mi se re re*

*mi se re re*

*no bis mi se re re*

*no bis*



Musical staff with notes and a treble clef. Lyrics: *gnus de i*

*gnus*

*de i*

Musical staff with notes and a treble clef. Lyrics: *qui tollis peccata mundi mi se re re nobis*

*qui tollis peccata*

*mundi mi se re re nobis*

Musical staff with notes and a treble clef. Lyrics: *mi se re re*

*mi se re re*

Musical staff with notes and a treble clef. Lyrics: *nobis et gnis de i*

*nobis*

*et*

*gnis de i*

Musical staff with notes and a treble clef. Lyrics: *qui tollis peccata mun*

*qui tollis peccata*

*mun*

Musical staff with notes and a treble clef. Lyrics: *di mi se re re no bis mi se re re nobis*

*di mi se re re*

*no bis*

*mi se re re*

*nobis*

Jo. Adouton



Musical score for the first system, featuring two staves of music with lyrics: *Deus de i qui tol lis pec ca ta mundi Do na nobis pacem Do na nobis pacem*. Below the staves are several empty musical staves.



Musical score for the second system, featuring two staves of music with lyrics: *Deus de i qui tollis pec cata mun di Do na nobis Do na nobis pa cem*. Below the staves are several empty musical staves.

Jo. Mouton



Deus de i

tollis pec ca ta mundi Dono no bis pacem



Deus de i qui tol lis peccata mundi

Dono nobis pa cem



Deus de i qui tol lis pec ca ta mundi Do no bis pacem

Do no bis pacem